



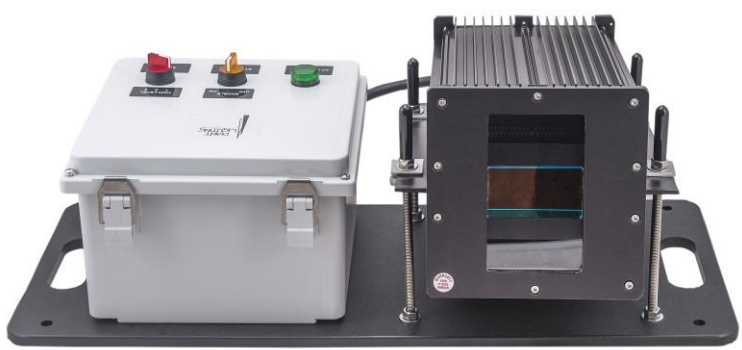
POINT HELIPORT LIGHTING PORTABLE HAPI LED HELICOPTER APPROACH PATH INDICATOR

Compliances: ETL Listed to UL 1598A Marine Vessels, IP66 & IP67
 ETL Listed to CSA C22.2 No. 137-M1981 & No. 250.0-08 Canada
 ETL Listed to UL 1598 at -40 deg C to +55 deg C
 ICAO Annex 14, Volume II, Chapter 5
 American Bureau of Shipping (ABS) Type Approval
 FAA AC 150/5390-2C, paragraphs 219, 318 & 418
 ONGC (India) FS-4044, paragraph 6.6
 Registered ISO 9001:2015



HAPI is a system for use as visual slope guidance on heliports. One HAPI system is for one helicopter approach path. It is installed on the side opposite the approach, facing across the landing area. Digital leveling and aiming by means of a handheld field programming device. The portable HAPI normally operates on its rechargeable internal battery for up to eight 15-minute landing cycles. Option -RF for activation via wireless device is available.





HAPI-89001-3-C082



PORTABLE HAPI

READY FOR DEPLOYMENT DIRECTLY FROM THE CASE



- HAPI SIGNALS:
-  Flashing – Above Slope
 -  On Slope
 -  Slightly Below Slope
 -  Flashing – Below Slope



Important Note:
 The HAPI system is a visual slope guidance aid to assist the pilot in aligning the aircraft for approach to landing. It does not replace the pilot's judgment, skill and responsibility to land the aircraft safely with or without this visual aid.



POINT HELIPORT LIGHTING PORTABLE HAPI LED HELICOPTER APPROACH PATH INDICATOR

OPTION -RF: WIRELESS ACTIVATION

Wireless ON-OFF operation via a wireless activator device operating at 918 MHz (USA & Australia) or 868 MHz (Europe). Each order will include one wireless activator device.

PORTABLE HAPI FEATURES

- ✓ Factory preassembled ready to deploy
- ✓ Rugged carrying case with handles & wheels
- ✓ Normally operates on internal rechargeable battery
- ✓ Charging cable also allows for operation on 96 – 265V AC power
- ✓ Timer allows for a 15-minute landing cycle & automatically turns off
- ✓ Eight (8) landing cycles per battery charge
- ✓ Includes handheld programmer for leveling & approach slope angle
- ✓ Legs adjust to the desired approach slope angle
- ✓ Rigid mounting plate for carrying, weighting or staking

Weight HAPI without case:	53 lbs	24.0 kg
Weight empty case:	43 lbs	19.5 kg
Weight Total for Transport:	97 lbs	43.5 kg
HAPI Slope Adjustment:	0° to 15°	
Brightness Control:	Three (3) steps	
HAPI Alarms:	Flasher Failure LED Array Failure Alignment	



View our YouTube slide show & flight test video of the Portable HAPI

Please follow Point Lighting Corporation on:

FACEBOOK INSTAGRAM YOUTUBE LINKEDIN



HAPI-89001-3-C082
Rear View



PL11248-HAPI
SYSTEM PROGRAMMER

Plugs into the rear of the HAPI unit for leveling and for setting of the aiming vertical angle.

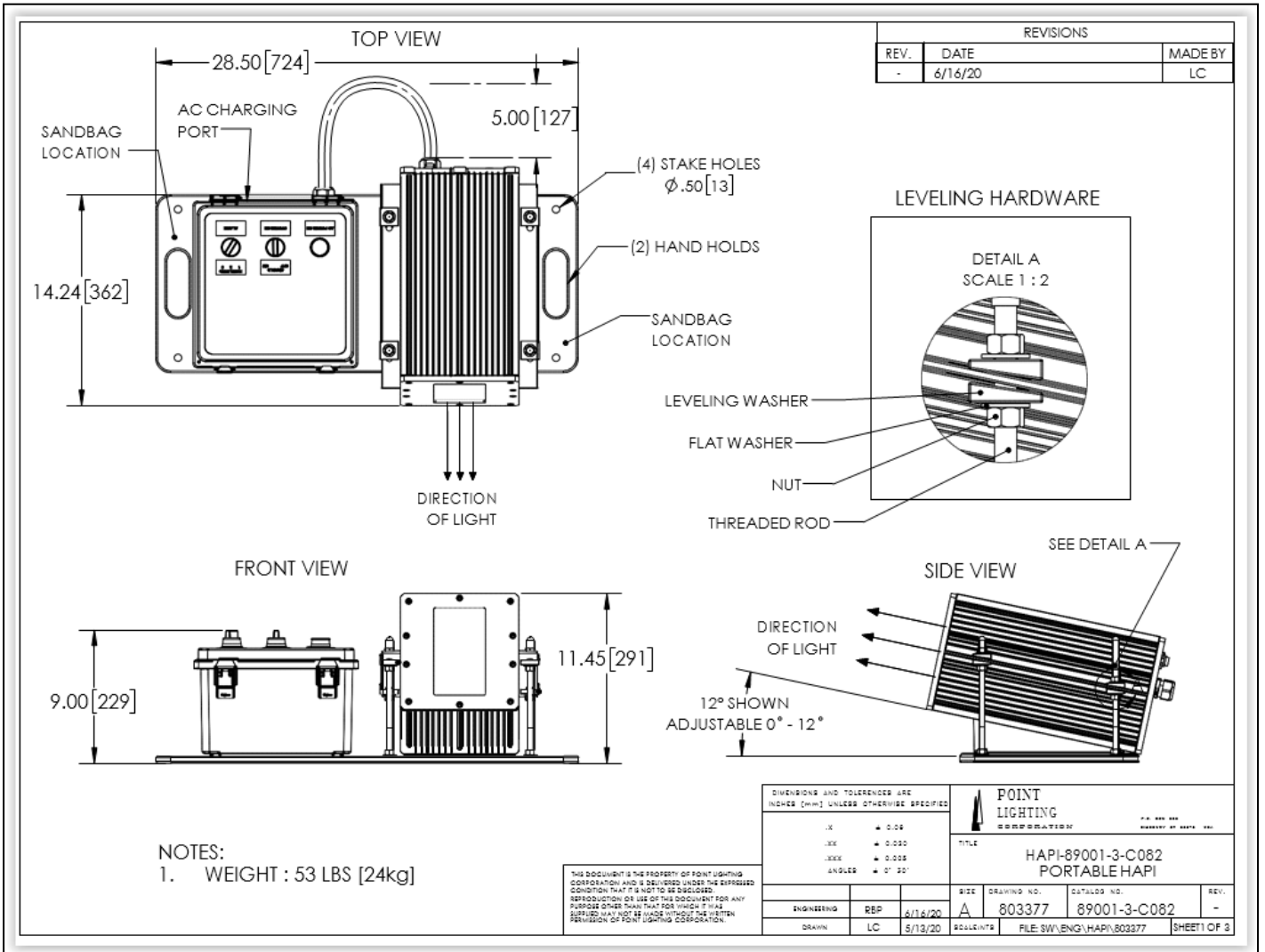


POINT HELIPORT LIGHTING PORTABLE HAPI LED HELICOPTER APPROACH PATH INDICATOR



HAPI LEG ASSEMBLY DETAIL
SHOWING BEVELED WASHERS FOR
POSITIVE MECHANICAL CONTACT

THE LEGS ADJUST FOR SETTING THE
APPROACH ANGLE DESIRED BY THE
PILOTS USING THE SYSTEM



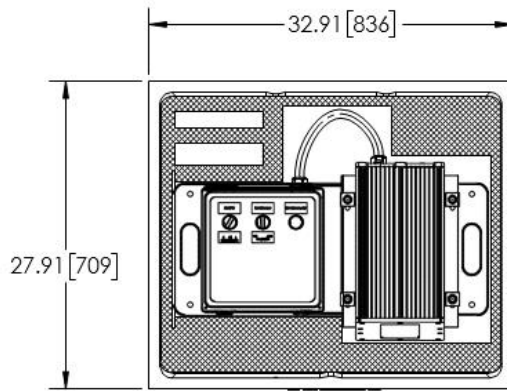
POINT HELIPORT LIGHTING PORTABLE HAPI LED HELICOPTER APPROACH PATH INDICATOR



PORTABLE HAPI
TRANSPORT CASE
WITH WHEELS & HANDLES

REVISIONS			
REV.	DESCRIPTION	DATE	MADE BY
-	INITIAL RELEASE	6/16/20	LC

TRANSPORT CASE WITH CUSTOM INSERT



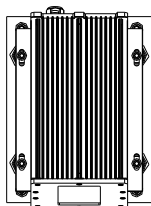
THIS DOCUMENT IS THE PROPERTY OF POINT LIGHTING CORPORATION AND IS CONTROLLED UNDER THE EMPLOYED CONDITION THAT IT IS NOT TO BE DISCLOSED, REPRODUCED OR USE OF THE DOCUMENT FOR ANY PURPOSE OTHER THAN THAT FOR WHICH IT WAS ISSUED. IT MAY NOT BE MADE WITHOUT THE WRITTEN PERMISSION OF POINT LIGHTING CORPORATION.

DIMENSIONS AND TOLERANCES ARE INCHES (MM) UNLESS OTHERWISE SPECIFIED				POINT LIGHTING CORPORATION	
.X	± 0.05	TITLE		HAPI-89001-3-C082 PORTABLE HAPI	
.XX	± 0.005	SIZE	DRAWING NO.	CATALOG NO.	REV.
.XXX	± 0.002	A	803377	89001-3-C082	-
ANGLE	± 0° 20'	ENGINEERING	RBP	DATE	6/16/20
DRAWN		LC	5/13/20	SCALE	1:1
FILE		SW\ENG\HAPI\803377		SHEET 2 OF 3	



HAPI-89001

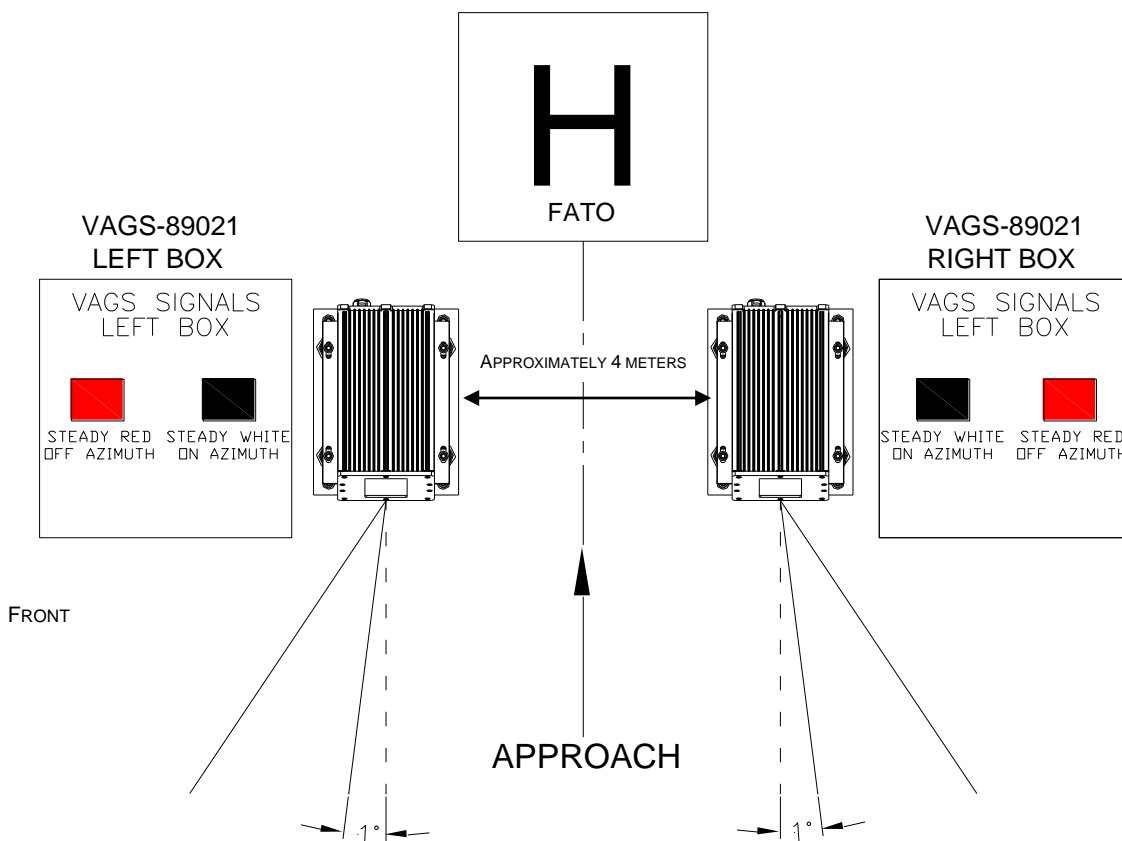
HAPI SIGNALS	
	FLASHING GREEN TOO HIGH
	STEADY GREEN ON SLOPE
	STEADY RED BELOW SLOPE
	FLASHING RED TOO LOW



AIMING:

If the HAPI system is installed with a VAGS system, both systems should be aimed at the same vertical angle. We recommend an On Slope vertical angle setting between 5 and 10 degrees. The HAPI angle must be set so the transition line to flashing red allows the aircraft to clear any obstacles in the approach path.

Not to Scale



POINT LIGHTING CORPORATION

Mail: P.O. Box 686, Simsbury, CT 06070

Tel 01 860.243.0600

email: Info@PointLighting.com

USA

Plant: 61-65 W. Dudley Town Rd, Bloomfield, CT

Fax 01 860.243.0665

website: www.PointLighting.com