

Point Lighting Corporation is the leader in product innovation for heliport lighting systems. We are the first FAA certified airfield lighting manufacturer to take a systematic approach applying product design knowledge specifically to heliport lighting and its control. We offer a complete line of LED lighting products for use on heliports. We also carefully have considered the unique installation requirements of heliports and helidecks and developed versions for all mounting situations. These installation issues are considered throughout this Heliport Lighting Selector and we offer all mounting details displayed in file 0MOUNTINGS in CAD files free for use by project design engineers.

[Click here to begin the questions that will lead you to the proper material list:](#) 



LED BEACONS



LED PERIMETER LIGHTS



LED SEMIFLUSH LIGHTS
FOR
OFFSHORE HELIDECKS



CIRCUIT & BRIGHTNESS
CONTROLS



WIND CONES

POINT LIGHTING CORPORATION

Mail: P.O. Box 686, Simsbury, CT 06070
Tel 01 860.243.0600
email: PointLighting@earthlink.net

Plant: West Dudley Town Rd, Bloomfield, CT
USA
Fax 01 860.243.0665
website: www.PointLighting.com



- Definitions:
- TLOF Touchdown & Liftoff Area *Touchdown Lights*
 - FATO Final Approach & Takeoff Area *Perimeter Lights*
 - Approach/Departure Path *Landing Direction (Lead-In) Lights*

Note!
Radio Control is available for all heliports either as a separate unit or integral with the PHC Heliport Controller. These units also include surge protection.

Is the heliport lighting to be classified as non-hazardous (safe area) or must the lighting be certified & listed for use in hazardous areas (explosion-proof)?

Click one answer

Non-hazardous (safe area)? Y

Hazardous area (explosion-proof)? X

Class I, Division 2, Groups A B C D, T6

Class I, Zone 2, Groups IIA IIB+H2 IIC, T6

Note: All lights in this category are LED.

Y

Click one answer

Is the heliport to be:

Built on the ground level?



A

Constructed on a roof?
(if raised prefab metal, see below)



B

An raised or offshore metal helideck?



C

Start Over



X

Click one answer

Is the heliport to be:

Built on the ground level?



XA

An raised or offshore metal helideck?



XC.1.a.1

Note! All LED lights should be installed with dedicated surge protection on the circuit. See Point lighting for details.

Start Over



A

Click one answer

Is the pavement to be new construction?
(The mounting bases will be in-pavement)



A.1

Is the pavement existing?
(The lights will be surface mounted)



A.2.b

Start Over



XA

Click one answer

Is the pavement to be new construction?
(The mounting bases will be in-pavement)



XA.1

Is the pavement existing?
(The lights will be surface mounted)



XA.2.b.1

Start Over



B

Click one answer

Is the pavement to be new construction?
(The mounting bases will be in-pavement)



B.1

Is the pavement existing?
(The lights will be surface mounted)



B.2

Start Over



C

Click one answer

Is the helideck land-based?
(Standard yellow powdercoat painted)



C.1

Powdercoat painted aviation yellow for corrosion resistance certified by the manufacturer to comply with the US Military Standard Salt Fog Test conducted per MIL-STD-810E, Method 509.3, Procedure I.

Is the helideck offshore?
(Marine Treatment process)



C.2.a

The fixture shall be treated for marine conditions by cleaning per US MIL method III of TT-C-490, chromate priming per US MIL-C-5541, epoxy powder base coat and glossy polyester powdercoat finish coat in color RAL 6003 (FED-STD-595 color #14097) dark green. Oven cured per US MIL-PRF-24712A.

Start Over



A.1 Which lighting configuration will be used?

Click one answer

TLOF: lighted

FATO: lighted



A.1.a

TLOF: not lighted

FATO: lighted



A.1.b

Start Over



XA.1 Which lighting configuration will be used?

Click one answer

TLOF: lighted FATO: lighted XA.1.a.1

TLOF: not lighted FATO: lighted XA.1.b.1

Start Over

B.1 Which lighting configuration will be used?

Click one answer

TLOF: lighted

FATO: lighted



B.1.a

TLOF: not lighted

FATO: lighted



B.1.b

Start Over



B.2 Which lighting configuration will be used?

Click one answer

TLOF: lighted

FATO: lighted

N/A*

TLOF: not lighted

FATO: lighted



B.2.b

* A TLOF must use inset lights; if inset is possible, start over as "new construction"

Start Over



C.1 Which lighting configuration will be used?

Click one answer

TLOF: lighted

FATO: lighted



C.1.a

TLOF: not lighted

FATO: lighted



C.1.b

Start Over



A.1.a What light source is requested?

Click one answer

Primarily LED
Dimmable; Long Life; Low VA



A.1.a.1

Primarily Incandescent
Not dimmable; 8000 hours lamp life; higher VA



A.1.a.2

Note! All LED lights should be installed with dedicated surge protection on the circuit. See Point lighting for details.

Start Over



A.1.b What light source is requested?

Click one answer

Primarily LED
Dimmable; Long Life; Low VA



A.1.b.1

Primarily Incandescent
Not dimmable; 8000 hours lamp life; higher VA



A.1.b.2

Note! All LED lights should be installed with dedicated surge protection on the circuit. See Point lighting for details.

Start Over



A.2.b What light source is requested?

Click one answer

Primarily LED
Dimmable; Long Life; Low VA



A.2.b.1

Primarily Incandescent
Not dimmable; 8000 hours lamp life; higher VA



A.2.b.2

Note! All LED lights should be installed with dedicated surge protection on the circuit. See Point lighting for details.

Start Over



B.1.a What light source is requested?

Click one answer

Primarily LED
Dimmable; Long Life; Low VA



B.1.a.1

Primarily Incandescent
Not dimmable; 8000 hours lamp life; higher VA



B.1.a.2

Note! All LED lights should be installed with dedicated surge protection on the circuit. See Point lighting for details.

Start Over



B.1.b What light source is requested?

Click one answer

Primarily LED
Dimmable; Long Life; Low VA



B.1.b.1

Primarily Incandescent
Not dimmable; 8000 hours lamp life; higher VA



B.1.b.2

Note! All LED lights should be installed with dedicated surge protection on the circuit. See Point lighting for details.

Start Over

B.2.b What light source is requested?

Click one answer

Primarily LED
Dimmable; Long Life; Low VA



B.2.b.1

Primarily Incandescent
Not dimmable; 8000 hours lamp life; higher VA



B.2.b.2

Note! All LED lights should be installed with dedicated surge protection on the circuit. See Point lighting for details.

Start Over



C.1.a What light source is requested?

Click one answer

Primarily LED
Dimmable; Long Life; Low VA



C.1.a.1

Primarily Incandescent
Not dimmable; 8000 hours lamp life; higher VA



C.1.a.2

Note! All LED lights should be installed with dedicated surge protection on the circuit. See Point lighting for details.

Start Over



C.1.b What light source is requested?

Click one answer

Primarily LED
Dimmable; Long Life; Low VA



C.1.b.1

Primarily Incandescent
Not dimmable; 8000 hours lamp life; higher VA



C.1.b.2

Note! All LED lights should be installed with dedicated surge protection on the circuit. See Point lighting for details.

Start Over



C.2.a What light source is requested?

Click one answer

Primarily LED
Dimmable; Long Life; Low VA



C.2.a.1

Primarily Incandescent
Not dimmable; 8000 hours lamp life; higher VA



C.2.a.2

Note! All LED lights should be installed with dedicated surge protection on the circuit. See Point lighting for details.

Start Over





Below are most common applications. For other versions or special requirements, contact Point Lighting.

<u>Selections</u>	<u>Use</u>	<u>File</u>
PRL-97002-1H-G-VB-PLB	TLOF and/or FATO; PLB-40300 base 10-inch deep *	HL115PRL
PEL-57003-G-1H-14-VB-PLB	FATO; PLB-40300 base 10-inch deep *	HL135PEL
PHL-57003-G-1H-500-VB-PLB	FATO; includes halogen floodlight; PLB-40300 base 10-inch deep *	HL145PHL
PSF-53005-1-L	FATO; surface mounted; LED floodlamps(2)	HL200PSF
PRL-97002-1H-Y-VB-PLB	Landing Direction; PLB-40300 base 10-inch deep *	HL115PRL
PEL-57003-Y-1H-14-VB-PLB	Landing Direction; PLB-40300 base 10-inch deep *	HL135PEL
PWC-8071L-1-ON-HBA-D-L	Lighted Wind Cone; Hinged base pole; 23-ft tall; LED obstruction light; LED PAR lights (58w total)	WC120PWC
PWC-8071L-1-ON-HBA-D	Lighted Wind Cone; Hinged base pole; 23-ft tall; LED obstruction light; Incandescent PAR lights (596w total)	WC144SPC WC110PWC
PWC-8061L-1-ON-FF-D-L	Lighted Wind Cone; Frangible pole; 10-ft tall; LED obstruction light; LED PAR lights (58w total)	WC120PWC
PWC-8061L-1-ON-FF-D	Lighted Wind Cone; Frangible pole; 10-ft tall; LED obstruction light; Incandescent PAR lights (596w total)	WC141SPC WC110PWC
Note: Option –C available for LED versions; internally & externally lighted (74w total)		
PHC-61003-1	Heliport Controller; Variable brightness	HL410PHC
Note: For fixed brightness, delete –VB from all lights and us PHC-61001-1		
POL-21003-R-1F-34B-S	Obstruction Light LED single	OL190LED

Other Equipment:

PRC-65001-1-xxx.xxx	Radio Controller	HL416PRC
PLL-21003-G-1F-34B-S	Simple Heliport Locator Light; LED; flashing	HL321PLL
PHB-37001-CGY-1-H	Heliport Beacon LED 3-colors	HL315PHB
PHB-37001-C-1-M	ICAO Identification Beacon Morse Code LED	HL315PHB
PHF-53001-500Q	Heliport Floodlight Assembly; pole mounted; 9.25-ft tall	HL210PHF
PHF-53002-500Q-PLB	Heliport Floodlight; frangible; ground mounted; PLB base	HL220PHF

Catalog numbers based on 120V and FAA recommended light colors.
Modify all catalog numbers as required for voltage and color changes.

* All PLB bases for LED lights may be substituted with PLS shallow bases

Start Over



POL EX



PRL EX



PRL-LSM EX



PEL EX

The items below are fixed brightness. For variable brightness, contact Point Lighting.

<u>Selections</u>	<u>Use</u>	<u>File</u>
PRL-97002-1H-G-EX-PLB	TLOF and/or FATO; PLB-40300 base 10-inch deep *	HL112PRLEX
PRL-97002-1H-G-EX-LSM	FATO	HL114LSMEX
PEL-57003-G-1H-10B-EX	FATO; Elevated Light	HL111PELEX
PRL-97002-1H-Y-EX-PLB	Landing Direction; PLB-40300 base 10-inch deep *	HL112PRLEX
PEL-57003-Y-1H-10B-EX	Landing Direction; Elevated Light	HL111PELEX
POL-21003-R-1F-10B-EX	Obstruction Light LED single Class 1, Div 2	OL193LEDEX
<u>Safe Area Equipment:</u>		
PHC-61001-1	Heliport Controller; Fixed brightness Available with optional EX rated enclosure	HL411PHC
PWC-8071L-1-ON-HBA-D-L	Lighted Wind Cone; Hinged base pole; 23-ft tall; LED obstruction light; LED PAR lights (58w total)	WC120PWC

Catalog numbers based on 120V and FAA recommended light colors.
Modify all catalog numbers as required for voltage and color changes.

* All PLB bases for LED lights may be substituted with PLS shallow bases

Start Over 



POL EX



PRL EX



PRL-LSM EX



PEL EX

The items below are fixed brightness. For variable brightness, contact Point Lighting.

<u>Selections</u>	<u>Use</u>	<u>File</u>
PRL-97002-1H-G-EX-PLB	FATO; PLB-40300 base 10-inch deep *	HL112PRLEX
PRL-97002-1H-G-EX-LSM	FATO	HL114LSMEX
PEL-57003-G-1H-10B-EX	FATO; Elevated Light	HL111PELEX
PRL-97002-1H-Y-EX-PLB	Landing Direction; PLB-40300 base 10-inch deep *	HL112PRLEX
PEL-57003-Y-1H-10B-EX	Landing Direction; Elevated Light	HL111PELEX
POL-21003-R-1F-10B-EX	Obstruction Light LED single Class 1, Div 2	OL193LEDEX
<u>Safe Area Equipment:</u>		
PHC-61001-1	Heliport Controller; Fixed brightness Available with optional EX rated enclosure	HL411PHC
PWC-8071L-1-ON-HBA-D-L	Lighted Wind Cone; Hinged base pole; 23-ft tall; LED obstruction light; LED PAR lights (58w total)	WC120PWC

Catalog numbers based on 120V and FAA recommended light colors.
Modify all catalog numbers as required for voltage and color changes.

* All PLB bases for LED lights may be substituted with PLS shallow bases

Start Over 



POL EX



PRL EX LSM



PEL EX

The items below are fixed brightness. For variable brightness, contact Point Lighting.

<u>Selections</u>	<u>Use</u>	<u>File</u>
PRL-97002-1H-G-EX-LSM	FATO	HL114LSMEX
PEL-57003-G-1H-10B-EX	FATO	HL111PELEX
PRL-97002-1H-Y-EX-LSM	Landing Direction	HL114LSMEX
PEL-57003-Y-1H-10B-EX	Landing Direction	HL111PELEX
POL-21003-R-1F-10B-EX	Obstruction Light LED single Class 1, Div 2	OL193LEDEX

Safe Area Equipment:

PHC-61001-1	Heliport Controller; Fixed brightness Available with optional EX rated enclosure	HL411PHC
PWC-8071L-1-ON-HBA-D-L	Lighted Wind Cone; Hinged base pole; 23-ft tall; LED obstruction light; LED PAR lights (58w total)	WC120PWC

Catalog numbers based on 120V and FAA recommended light colors.
Modify all catalog numbers as required for voltage and color changes.

XA.2.b.1

Start Over 



PRL EX



POL EX



PRL-LSM EX

The items below are fixed brightness. For variable brightness, contact Point Lighting.

<u>Selections</u>	<u>Use</u>	<u>File</u>
PRL-97702-1H-G-EX	TLOF	HL113PRLEX
PRL-97702-1H-G-EX-PLB	TLOF	HL113PRLEX
PRL-97002-1H-G-EX-LSM	FATO	HL114LSMEX
POL-21003-R-1F-10B-EX	Obstruction Light LED single Class 1, Div 2	OL193LEDEX

Safe Area Equipment:

PHC-61001-1	Heliport Controller; Fixed brightness Available with optional EX rated enclosure	HL411PHC
SPU-10770-1	Surge Protector Unit; 1-circuit	HL415SPU
PWC-8071L-1-ON-HBA-D-L	Lighted Wind Cone; Hinged base pole; 23-ft tall; LED obstruction light; LED PAR lights (58w total)	WC120PWC

Catalog numbers based on 120V and FAA recommended light colors.
Modify all catalog numbers as required for voltage and color changes.



PRL



PEL



PHL



POL



PSF

Below are most common applications. For other versions or special requirements, contact Point Lighting.

<u>Selections</u>	<u>Use</u>	<u>File</u>
PRL-90000-2-G-69A-PLB	TLOF and/or FATO; PLB-40300 base 10-inch deep	HL120PRL
PEL-50000-G-69A-14-PLB	FATO; PLB-40300 base 10-inch deep	HL140PEL
PHL-50000-G-69A-500-PLB	FATO; includes halogen floodlight; PLB-40300 base 10-inch deep	HL150PHL
PSF-53005-1	FATO; surface mounted; includes 90w floodlamps(2)	HL200PSF
PRL-90000-2-Y-40A-PLB	Landing Direction; PLB-40300 base 10-inch deep	HL120PRL
PEL-50000-Y-40A-14-PLB	Landing Direction; PLB-40300 base 10-inch deep *	HL140PEL
PWC-8071L-1-ON-HBA	Lighted Wind Cone; Hinged base pole; 23-ft tall; Obstruction light; Incandescent PAR lights	WC144SPC WC110PWC
PWC-8061L-1-ON-FF	Lighted Wind Cone; Frangible pole; 10-ft tall; Obstruction light; Incandescent PAR lights	WC141SPC WC110PWC
PHC-61001-1	Heliport Controller; Fixed brightness	HL411PHC
POL-20000-R-116-34B-DT	Obstruction Light double with transfer	OL110POL

Other Equipment:

PRC-65001-1-xxx.xxx	Radio Controller	HL416PRC
PLL-21003-G-1F-34B-S	Simple Heliport Locator Light; LED; flashing	HL321PLL
PHB-37001-CGY-1-H	Heliport Beacon LED 3-colors	HL315PHB
PHB-37001-C-1-M	ICAO Identification Beacon Morse Code LED	HL315PHB
PHF-53001-500Q	Heliport Floodlight Assembly; pole mounted; 9.25-ft tall	HL210PHF
PHF-53002-500Q-PLB	Heliport Floodlight; frangible; ground mounted; PLB base	HL220PHF

Catalog numbers based on 120V and FAA recommended light colors.
Modify all catalog numbers as required for voltage and color changes.

Start Over 



Below are most common applications. For other versions or special requirements, contact Point Lighting.

<u>Selections</u>	<u>Use</u>	<u>File</u>
PRL-97002-1H-G-VB-PLB	FATO; PLB-40300 base 10-inch deep *	HL115PRL
PEL-57003-G-1H-14-VB-PLB	FATO; PLB-40300 base 10-inch deep *	HL135PEL
PHL-57003-G-1H-500-VB-PLB	FATO; includes halogen floodlight; PLB-40300 base 10-inch deep *	HL145PHL
PSF-53005-1-L	FATO; surface mounted; LED floodlamps(2)	HL200PSF
PRL-97002-1H-Y-VB -PLB	Landing Direction; PLB-40300 base 10-inch deep *	HL115PRL
PEL-57003-Y-1H-14-VB -PLB	Landing Direction; PLB-40300 base 10-inch deep *	HL135PEL
PWC-8071L-1-ON-HBA-D-L	Lighted Wind Cone; Hinged base pole; 23-ft tall; LED obstruction light; LED PAR lights (58w total)	WC120PWC
PWC-8071L-1-ON-HBA-D	Lighted Wind Cone; Hinged base pole; 23-ft tall; LED obstruction light; Incandescent PAR lights (596w total)	WC144SPC WC110PWC
PWC-8061L-1-ON-FF-D-L	Lighted Wind Cone; Frangible pole; 10-ft tall; LED obstruction light; LED PAR lights (58w total)	WC120PWC
PWC-8061L-1-ON-FF-D	Lighted Wind Cone; Frangible pole; 10-ft tall; LED obstruction light; Incandescent PAR lights (596w total)	WC141SPC WC110PWC
Note: Option –C available for LED versions; internally & externally lighted (74w total)		
PHC-61002-1	Heliport Controller; Variable brightness	HL410PHC
Note: For fixed brightness, delete –VB from all lights and us PHC-61001-1		
POL-21003-R-1F-34B-S	Obstruction Light LED single	OL190LED
<u>Other Equipment:</u>		
PRC-65001-1-xxx.xxx	Radio Controller	HL416PRC
PLL-21003-G-1F-34B-S	Simple Heliport Locator Light; LED; flashing	HL321PLL
PHB-37001-CGY-1-H	Heliport Beacon LED 3-colors	HL315PHB
PHB-37001-C-1-M	ICAO Identification Beacon Morse Code LED	HL315PHB
PHF-53001-500Q	Heliport Floodlight Assembly; pole mounted; 9.25-ft tall	HL210PHF
PHF-53002-500Q-PLB	Heliport Floodlight; frangible; ground mounted; PLB base	HL220PHF

Catalog numbers based on 120V and FAA recommended light colors.
Modify all catalog numbers as required for voltage and color changes.

* All PLB bases for LED lights may be substituted with PLS shallow bases

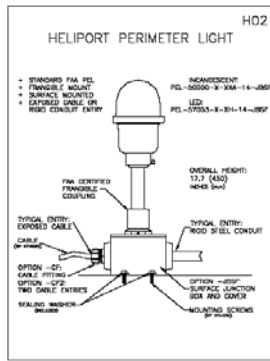
Start Over 



Below are most common applications. For other versions or special requirements, contact Point Lighting.

<u>Selections</u>	<u>Use</u>	<u>File</u>
PRL-90000-2-G-69A-PLB	FATO; PLB-40300 base 10-inch deep	HL120PRL
PEL-50000-G-69A-14-PLB	FATO; PLB-40300 base 10-inch deep	HL140PEL
PHL-50000-G-69A-500-PLB	FATO; includes halogen floodlight; PLB-40300 base 10-inch deep	HL150PHL
PSF-53005-1	FATO; surface mounted; includes 90w floodlamps(2)	HL200PSF
PRL-90000-2-Y-40A-PLB	Landing Direction; PLB-40300 base 10-inch deep	HL120PRL
PEL-50000-Y-40A-14-PLB	Landing Direction; PLB-40300 base 10-inch deep *	HL140PEL
PWC-8071L-1-ON-HBA	Lighted Wind Cone; Hinged base pole; 23-ft tall; Obstruction light; Incandescent PAR lights	WC144SPC WC110PWC
PWC-8061L-1-ON-FF	Lighted Wind Cone; Frangible pole; 10-ft tall; Obstruction light; Incandescent PAR lights	WC141SPC WC110PWC
PHC-61001-1	Heliport Controller; Fixed brightness	HL411PHC
POL-20000-R-116-34B-DT	Obstruction Light double with transfer	OL110POL
<u>Other Equipment:</u>		
PRC-65001-1-xxx.xxx	Radio Controller	HL416PRC
PLL-21003-G-1F-34B-S	Simple Heliport Locator Light; LED; flashing	HL321PLL
PHB-37001-CGY-1-H	Heliport Beacon LED 3-colors	HL315PHB
PHB-37001-C-1-M	ICAO Identification Beacon Morse Code LED	HL315PHB
PHF-53001-500Q	Heliport Floodlight Assembly; pole mounted; 9.25-ft tall	HL210PHF
PHF-53002-500Q-PLB	Heliport Floodlight; frangible; ground mounted; PLB base	HL220PHF

Catalog numbers based on 120V and FAA recommended light colors.
Modify all catalog numbers as required for voltage and color changes.



PEL JBSF

PEL LP JBS3

PSF LED

POL LED

PRL-LSM LED

Below are most common applications. For other versions or special requirements, contact Point Lighting.

<u>Selections</u>	<u>Use</u>	<u>File</u>
PEL-57003-G-1H-14-VB-JBSF	FATO; FAA frangible; Surface junction box	HL135PEL
PRL-97002-1H-G-VB-LSM	FATO; Low surface mount	HL117LSM
PHL-57003-G-1H-500-VB-JBSF	FATO; FAA frangible; Halogen floodlight; Surface junction box	HL145PHL
PEL-57003-G-1H-LP34-VB-JBS3	FATO; Low profile; Surface junction box	HL155PEL
PSF-53005-1-L	FATO; surface mounted; LED floodlamps(2)	HL200PSF
PWC-8071L-1-ON-HBA-D-L	Lighted Wind Cone; Hinged base pole; 23-ft tall; LED obstruction light; LED PAR lights (58w total)	WC120PWC
PWC-8071L-1-ON-HBA-D	Lighted Wind Cone; Hinged base pole; 23-ft tall; LED obstruction light; Incandescent PAR lights (596w total)	WC144SPC WC110PWC
PWC-8061L-1-ON-FF-D-L	Lighted Wind Cone; Frangible pole; 10-ft tall; LED obstruction light; LED PAR lights (58w total)	WC120PWC
PWC-8061L-1-ON-FF-D	Lighted Wind Cone; Frangible pole; 10-ft tall; LED obstruction light; Incandescent PAR lights (596w total)	WC141SPC WC110PWC
Note: Option -C available for LED versions; internally & externally lighted (74w total)		
PHC-61002-1	Heliport Controller; Variable brightness	HL410PHC

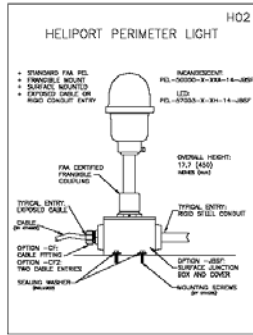
Note: For fixed brightness, delete -VB from all lights and us PHC-61001-1

POL-21003-R-1F-34B-S	Obstruction Light LED single	OL190LED
----------------------	------------------------------	----------

Other Equipment:

PRC-65001-1-xxx.xxx	Radio Controller	HL416PRC
PLL-21003-G-1F-34B-S	Simple Heliport Locator Light; LED; flashing	HL321PLL
PHB-37001-CGY-1-H	Heliport Beacon LED 3-colors	HL315PHB
PHB-37001-C-1-M	ICAO Identification Beacon Morse Code LED	HL315PHB
PHF-53002-500Q-JBSF	Heliport Floodlight; Frangible; Ground mounted; Surface junction box	HL220PHF

Catalog numbers based on 120V and FAA recommended light colors. Modify all catalog numbers as required for voltage and color changes.



PEL JBSF



PEL LP JBS3



PSF



POL

Below are most common applications. For other versions or special requirements, contact Point Lighting.

<u>Selections</u>	<u>Use</u>	<u>File</u>
PEL-50000-G-69A-14-JBSF	FATO; FAA frangible; Surface junction box	HL140PEL
PHL-50000-G-69A-500-JBSF	FATO; FAA frangible; Halogen floodlight; Surface junction box	HL150PHL
PEL-50000-G-69A-LP34-JBS3	FATO; Low profile; Surface junction box	HL160PEL
PSF-53005-1	FATO; surface mounted; includes 90w floodlamps(2)	HL200PSF
PWC-8071L-1-ON-HBA	Lighted Wind Cone; Hinged base pole; 23-ft tall; Obstruction light; Incandescent PAR lights	WC144SPC WC110PWC
PWC-8061L-1-ON-FF	Lighted Wind Cone; Frangible pole; 10-ft tall; Obstruction light; Incandescent PAR lights	WC141SPC WC110PWC
PHC-61001-1	Heliport Controller; Fixed brightness	HL411PHC
POL-20000-R-116-34B-DT	Obstruction Light double with transfer	OL110POL
<u>Other Equipment:</u>		
PRC-65001-1-xxx.xxx	Radio Controller	HL416PRC
PLL-21003-G-1F-34B-S	Simple Heliport Locator Light; LED; flashing	HL321PLL
PHB-37001-CGY-1-H	Heliport Beacon LED 3-colors	HL315PHB
PHB-37001-C-1-M	ICAO Identification Beacon Morse Code LED	HL315PHB
PHF-53002-500Q-JBSF	Heliport Floodlight; Frangible; Ground mounted; Surface junction box	HL220PHF

Catalog numbers based on 120V and FAA recommended light colors. Modify all catalog numbers as required for voltage and color changes.

Start Over 



PRL LED

PEL LED

PHL LED

POL LED

PSF LED

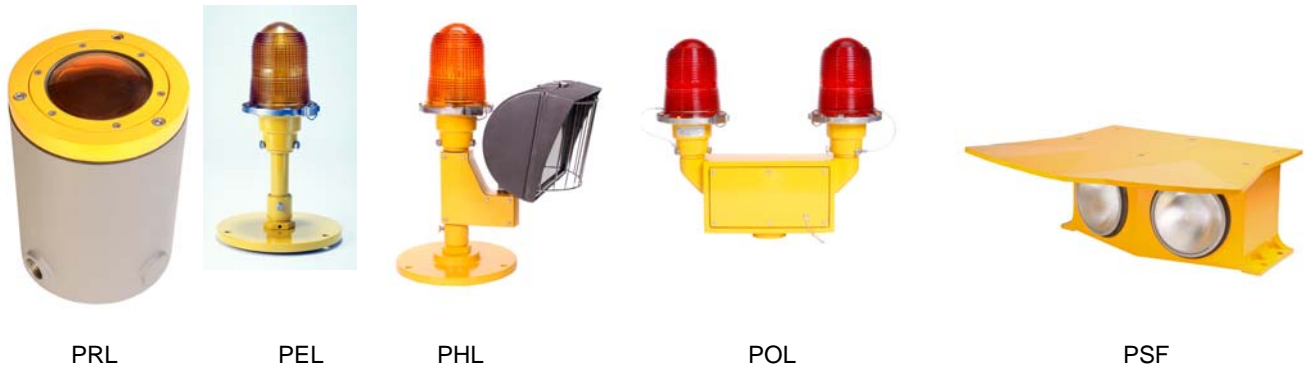
Below are most common applications. For other versions or special requirements, contact Point Lighting.

<u>Selections</u>	<u>Use</u>	<u>File</u>
PRL-97002-1H-G-VB-PLS	TLOF and/or FATO; PLS-40304 shallow base *	HL115PRL
PEL-57003-G-1H-14-VB-PLS	FATO; PLS-40304 shallow base *	HL135PEL
PHL-57003-G-1H-500-VB-PLS	FATO; includes halogen floodlight; PLS-40304 shallow base *	HL145PHL
PSF-53005-1-L	FATO; surface mounted; LED floodlamps(2)	HL200PSF
PWC-8061L-1-ON-FF-D-L-G-T	Lighted Wind Cone; 10-ft tall; LED obstruction light; LED PAR lights (58w total); with safety options of stainless steel tether & machined solid coupling	WC120PWC
PWC-8061L-1-ON-FF-D-G-T	Lighted Wind Cone; 10-ft tall; LED obstruction light; Incandescent PAR lights 596w total); with safety options of stainless steel tether & machined solid coupling Note: Option -C available for LED version; internally & externally lighted (74w total)	WC141SPC WC110PWC
PHC-61002-1	Heliport Controller; Variable brightness	HL410PHC
Note: For fixed brightness, delete -VB from all lights and us PHC-61001-1		
POL-21003-R-1F-34B-S	Obstruction Light LED single	OL190LED
<u>Other Equipment:</u>		
PRC-65001-1-xxx.xxx	Radio Controller	HL416PRC
PLL-21003-G-1F-34B-S	Simple Heliport Locator Light; LED; flashing	HL321PLL
PHB-37001-CGY-1-H	Heliport Beacon LED 3-colors	HL315PHB
PHB-37001-C-1-M	ICAO Identification Beacon Morse Code LED	HL315PHB
PHF-53002-500Q-PLS	Heliport Floodlight; frangible; ground mounted; PLS base	HL220PHF

Catalog numbers based on 120V and FAA recommended light colors.
Modify all catalog numbers as required for voltage and color changes.

* All PLS bases for LED lights may be substituted with PLB 10-in deep bases

Start Over



Below are most common applications. For other versions or special requirements, contact Point Lighting.

<u>Selections</u>	<u>Use</u>	<u>File</u>
PRL-90000-2-G-69A-PLB	TLOF and/or FATO; PLB-40300 base 10-inch deep *	HL120PRL
PEL-50000-G-69A-14-PLS	FATO; PLS-40304 shallow base	HL140PEL
PHL-50000-G-69A-500-PLS	FATO; includes halogen floodlight; PLS-40304 shallow base	HL150PHL
PSF-53005-1	FATO; surface mounted; includes 90w floodlamps(2)	HL200PSF
PWC-8061L-1-ON-FF-G-T	Lighted Wind Cone; 10-ft tall; obstruction light; Incandescent PAR lights; with safety options of stainless steel tether & machined solid coupling	WC141SPC WC110PWC
PHC-61001-1	Heliport Controller; Fixed brightness	HL411PHC
POL-20000-R-116-34B-DT	Obstruction Light double with transfer	OL110POL
<u>Other Equipment:</u>		
PRC-65001-1-xxx.xxx	Radio Controller	HL416PRC
PLL-21003-G-1F-34B-S	Simple Heliport Locator Light; LED; flashing	HL321PLL
PHB-37001-CGY-1-H	Heliport Beacon LED 3-colors	HL315PHB
PHB-37001-C-1-M	ICAO Identification Beacon Morse Code LED	HL315PHB
PHF-53002-500Q-PLS	Heliport Floodlight; frangible; ground mounted; PLS base	HL220PHF

Catalog numbers based on 120V and FAA recommended light colors.
Modify all catalog numbers as required for voltage and color changes.

* PLB base is required for the PRL incandescent version.

Start Over 

B.1.a.2



PRL LED PEL LED PHL LED POL LED PSF LED

Below are most common applications. For other versions or special requirements, contact Point Lighting.

<u>Selections</u>	<u>Use</u>	<u>File</u>
PRL-97002-1H-G-VB-PLS	FATO; PLS-40304 shallow base *	HL115PRL
PEL-57003-G-1H-14-VB-PLS	FATO; PLS-40304 shallow base *	HL135PEL
PHL-57003-G-1H-500-VB-PLS	FATO; includes halogen floodlight; PLS-40304 shallow base *	HL145PHL
PSF-53005-1-L	FATO; surface mounted; LED floodlamps(2)	HL200PSF
PWC-8061L-1-ON-FF-D-L-G-T	Lighted Wind Cone; 10-ft tall; LED obstruction light; LED PAR lights (58w total); with safety options of stainless steel tether & machined solid coupling	WC120PWC
PWC-8061L-1-ON-FF-D-G-T	Lighted Wind Cone; 10-ft tall; LED obstruction light; Incandescent PAR lights 596w total); with safety options of stainless steel tether & machined solid coupling	WC141SPC WC110PWC
Note: Option –C available for LED version; internally & externally lighted (74w total)		
PHC-61002-1	Heliport Controller; Variable brightness	HL410PHC
Note: For fixed brightness, delete –VB from all lights and us PHC-61001-1		
POL-21003-R-1F-34B-S	Obstruction Light LED single	OL190LED
<u>Other Equipment:</u>		
PRC-65001-1-xxx.xxx	Radio Controller	HL416PRC
PLL-21003-G-1F-34B-S	Simple Heliport Locator Light; LED; flashing	HL321PLL
PHB-37001-CGY-1-H	Heliport Beacon LED 3-colors	HL315PHB
PHB-37001-C-1-M	ICAO Identification Beacon Morse Code LED	HL315PHB
PHF-53002-500Q-PLS	Heliport Floodlight; frangible; ground mounted; PLS base	HL220PHF

Catalog numbers based on 120V and FAA recommended light colors. Modify all catalog numbers as required for voltage and color changes.

* All PLS bases for LED lights may be substituted with PLB 10-in deep bases

Start Over



Below are most common applications. For other versions or special requirements, contact Point Lighting.

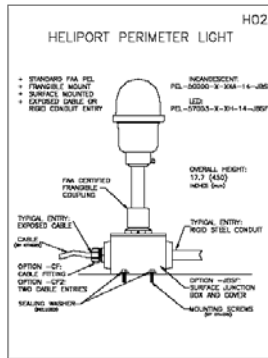
<u>Selections</u>	<u>Use</u>	<u>File</u>
PRL-90000-2-G-69A-PLB	FATO; PLB-40300 base 10-inch deep *	HL120PRL
PEL-50000-G-69A-14-PLS	FATO; PLS-40304 shallow base	HL140PEL
PHL-50000-G-69A-500-PLS	FATO; includes halogen floodlight; PLS-40304 shallow base	HL150PHL
PSF-53005-1	FATO; surface mounted; includes 90w floodlamps(2)	HL200PSF
PWC-8061L-1-ON-FF-G-T	Lighted Wind Cone; 10-ft tall; obstruction light; Incandescent PAR lights; with safety options of stainless steel tether & machined solid coupling	WC141SPC WC110PWC
PHC-61001-1	Heliport Controller; Fixed brightness	HL411PHC
POL-20000-R-116-34B-DT	Obstruction Light double with transfer	OL110POL
<u>Other Equipment:</u>		
PRC-65001-1-xxx.xxx	Radio Controller	HL416PRC
PLL-21003-G-1F-34B-S	Simple Heliport Locator Light; LED; flashing	HL321PLL
PHB-37001-CGY-1-H	Heliport Beacon LED 3-colors	HL315PHB
PHB-37001-C-1-M	ICAO Identification Beacon Morse Code LED	HL315PHB
PHF-53002-500Q-PLS	Heliport Floodlight; frangible; ground mounted; PLS base	HL220PHF

Catalog numbers based on 120V and FAA recommended light colors. Modify all catalog numbers as required for voltage and color changes.

* PLB base is required for the PRL incandescent version.

Start Over 

B.1.b.2



PEL JBSF



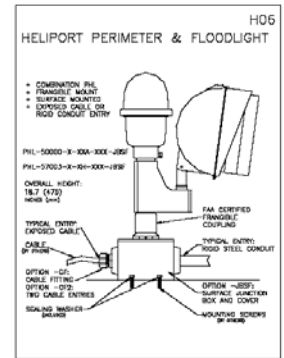
PEL LP JBS3



PSF LED



POL LED



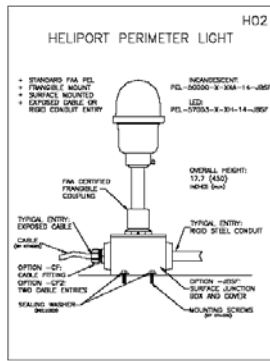
PHL JBSF

Below are most common applications. For other versions or special requirements, contact Point Lighting.

<u>Selections</u>	<u>Use</u>	<u>File</u>
PEL-57003-G-1H-14-VB-JBSF	FATO; FAA frangible; Surface junction box	HL135PEL
PHL-57003-G-1H-500-VB-JBSF	FATO; FAA frangible; Halogen floodlight; Surface junction box	HL145PHL
PEL-57003-G-1H-LP34-VB-JBS3	FATO; Low profile; Surface junction box	HL155PEL
PSF-53005-1-L	FATO; surface mounted; LED floodlamps(2)	HL200PSF
PWC-8061L-1-ON-FF-D-L-G-T	Lighted Wind Cone; 10-ft tall; LED obstruction light; LED PAR lights (58w total); with safety options of stainless steel tether & machined solid coupling	WC120PWC
PWC-8061L-1-ON-FF-D-G-T	Lighted Wind Cone; 10-ft tall; LED obstruction light; Incandescent PAR lights 596w total); with safety options of stainless steel tether & machined solid coupling Note: Option -C available for LED version; internally & externally lighted (74w total)	WC141SPC WC110PWC
PHC-61002-1	Heliport Controller; Variable brightness Note: For fixed brightness, delete -VB from all lights and us PHC-61001-1	HL410PHC
POL-21003-R-1F-34B-S	Obstruction Light LED single	OL190LED
<u>Other Equipment:</u>		
PRC-65001-1-xxx.xxx	Radio Controller	HL416PRC
PLL-21003-G-1F-34B-S	Simple Heliport Locator Light; LED; flashing	HL321PLL
PHB-37001-CGY-1-H	Heliport Beacon LED 3-colors	HL315PHB
PHB-37001-C-1-M	ICAO Identification Beacon Morse Code LED	HL315PHB
PHF-53002-500Q-JBSF	Heliport Floodlight; Frangible; Ground mounted; Surface junction box	HL220PHF

Catalog numbers based on 120V and FAA recommended light colors. Modify all catalog numbers as required for voltage and color changes.

Start Over 



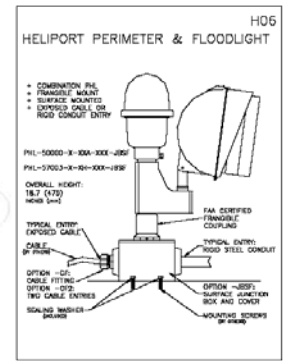
PEL JBSF



PSF



POL



PHL JBSF

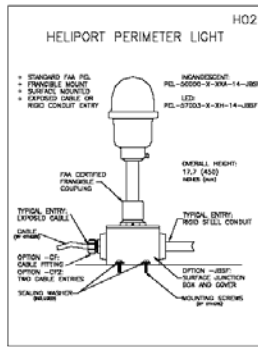
Below are most common applications. For other versions or special requirements, contact Point Lighting.

<u>Selections</u>	<u>Use</u>	<u>File</u>
PEL-50000-G-69A-14-JBSF	FATO; FAA frangible; Surface junction box	HL140PEL
PHL-50000-G-69A-500-JBSF	FATO; FAA frangible; Halogen floodlight; Surface junction box	HL150PHL
PEL-50000-G-69A-LP34-JBS3	FATO; Low profile; Surface junction box	HL160PEL
PSF-53005-1	FATO; surface mounted; includes 90w floodlamps(2)	HL200PSF
PWC-8061L-1-ON-FF-G-T	Lighted Wind Cone; 10-ft tall; Obstruction light; Incandescent PAR lights; with safety options of stainless steel tether & machined solid coupling	WC141SPC WC110PWC
PHC-61001-1	Heliport Controller; Fixed brightness	HL411PHC
POL-20000-R-116-34B-DT	Obstruction Light double with transfer	OL110POL
<u>Other Equipment:</u>		
PRC-65001-1-xxx.xxx	Radio Controller	HL416PRC
PLL-21003-G-1F-34B-S	Simple Heliport Locator Light; LED; flashing	HL321PLL
PHB-37001-CGY-1-H	Heliport Beacon LED 3-colors	HL315PHB
PHB-37001-C-1-M	ICAO Identification Beacon Morse Code LED	HL315PHB
PHF-53002-500Q-JBSF	Heliport Floodlight; Frangible; Ground mounted; Surface junction box	HL220PHF

Catalog numbers based on 120V and FAA recommended light colors.
Modify all catalog numbers as required for voltage and color changes.

Start Over

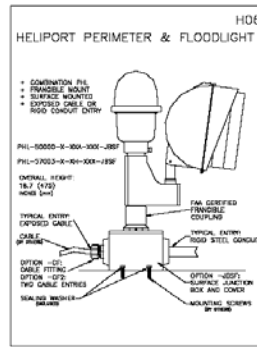
B.2.b.2



PEL JBSF



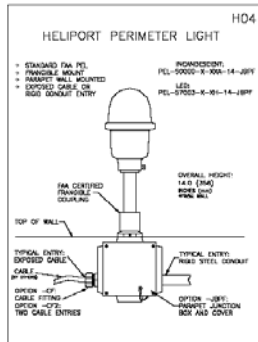
PEL LP JBS3



PHL JBSF



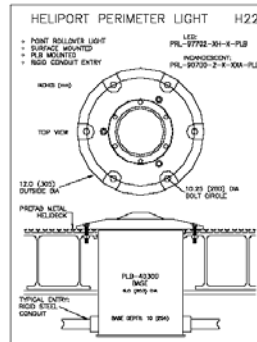
POL LED



PEL JBPF



PRL LSM



PRL-97702 PLB



PRL-97702-CL



PHB LED



PSF-53005 LED



PSF-57203 LED

Below are most common applications. For other versions or special requirements, contact Point Lighting.

<u>Selections</u>	<u>Use</u>	<u>File</u>
PRL-97702-1H-G-VB-PLB	TLOF and/or FATO; 12-inch dia; Conduit system; PLB-40300 base	HL116PRL
PRL-97702-1H-G-VB-CL	TLOF and/or FATO; 12-inch dia; Exposed cable or flexible conduit	HL116PRL
PEL-57003-G-1H-14-VB-JBSF	FATO; FAA frangible; Surface junction box	HL135PEL
PHL-57003-G-1H-500-VB-JBSF	FATO; FAA frangible; Halogen floodlight; Surface junction box	HL145PHL
PEL-57003-G-1H-14-VB-JBPF	FATO; FAA frangible; Parapet junction box	HL135PEL
PHL-57003-G-1H-500-VB-JBPF	FATO; FAA frangible; Halogen floodlight; Parapet junction box	HL145PHL
PRL-97002-1H-G-VB-LSM	FATO; Low surface mount	HL117PRL
PEL-57003-G-1H-LP34-VB-JBS3	FATO; Low profile; Surface junction box	HL155PEL
PSF PSF-53005-1-L	FATO; surface mounted; LED floodlamps(2)	HL200PSF

PWC-8071L-1-ON-HBA-D-L	Lighted Wind Cone; Hinged base pole; 23-ft tall; LED obstruction light; LED PAR lights (58w total)	WC120PWC
PWC-8071L-1-ON-HBA-D	Lighted Wind Cone; Hinged base pole; 23-ft tall; LED obstruction light; Incandescent PAR lights (596w total)	WC144SPC WC110PWC
PWC-8061L-1-ON-FF-D-L	Lighted Wind Cone; Frangible pole; 10-ft tall; LED obstruction light; LED PAR lights (58w total)	WC120PWC
PWC-8061L-1-ON-FF-D	Lighted Wind Cone; Frangible pole; 10-ft tall; LED obstruction light; Incandescent PAR lights (596w total)	WC141SPC WC110PWC

Note: Option –C available for LED versions; internally & externally lighted (74w total)

PHC-61003-1 Heliport Controller; **Variable brightness** HL410PHC

Note: For fixed brightness, delete –VB from all lights and us PHC-61001-1

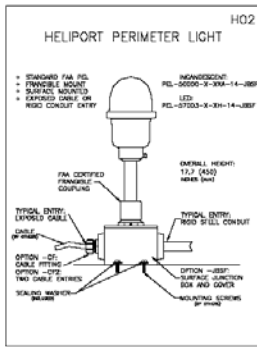
POL-21003-R-1F-34B-S Obstruction Light LED single OL190LED

Other Equipment:

PRC-65001-1-xxx.xxx	Radio Controller	HL416PRC
PLL-21003-G-1F-34B-S	Simple Heliport Locator Light; LED; flashing	HL321PLL
PHB-37001-CGY-1-H	Heliport Beacon LED 3-colors	HL315PHB
PHB-37001-C-1-M	ICAO Identification Beacon Morse Code LED	HL315PHB
PHF-53002-500Q-JBSF	Heliport Floodlight; frangible; ground mounted; Junction box	HL220PHF

Catalog numbers based on 120V and FAA recommended light colors.
Modify all catalog numbers as required for voltage and color changes.

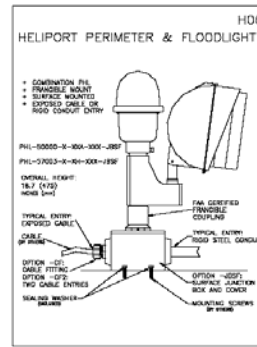
Start Over 



PEL JBSF



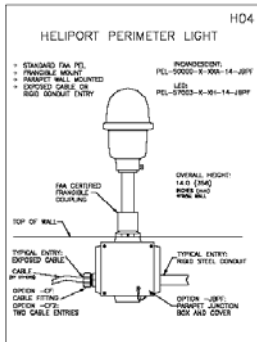
PEL LP JBS3



PHL JBSF



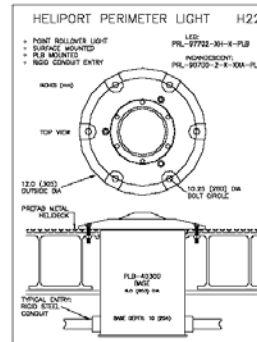
POL LED



PEL JBPf



PRL LSM



PRL-97702 PLB



PRL-97702-CL



PHB LED



PSF-53005 LED



PSF-57203 LED

Below are most common applications. For other versions or special requirements, contact Point Lighting.

<u>Selections</u>	<u>Use</u>	<u>File</u>
PRL-97702-1H-G-VB-PLB	FATO; 12-inch diameter; Conduit system; PLB-40300 base	HL116PRL
PRL-97702-1H-G-VB-CL	FATO; 12-inch diameter; Exposed cable or flexible conduit	HL116PRL
PEL-57003-G-1H-14-VB-JBSF	FATO; FAA frangible; Surface junction box	HL135PEL
PHL-57003-G-1H-500-VB-JBSF	FATO; FAA frangible; Halogen floodlight; Surface junction box	HL145PHL
PEL-57003-G-1H-14-VB-JBPf	FATO; FAA frangible; Parapet junction box	HL135PEL
PHL-57003-G-1H-500-VB-JBPf	FATO; FAA frangible; Halogen floodlight; Parapet junction box	HL145PHL
PRL-97002-1H-G-VB-LSM	FATO; Low surface mount	HL117PRL
PEL-57003-G-1H-LP34-VB-JBS3	FATO; Low profile; Surface junction box	HL155PEL
PSF-53005-1-L	FATO; surface mounted; LED floodlamps(2)	HL200PSF

PWC-8071L-1-ON-HBA-D-L	Lighted Wind Cone; Hinged base pole; 23-ft tall; LED obstruction light; LED PAR lights (58w total)	WC120PWC
PWC-8071L-1-ON-HBA-D	Lighted Wind Cone; Hinged base pole; 23-ft tall; LED obstruction light; Incandescent PAR lights (596w total)	WC144SPC WC110PWC
PWC-8061L-1-ON-FF-D-L	Lighted Wind Cone; Frangible pole; 10-ft tall; LED obstruction light; LED PAR lights (58w total)	WC120PWC
PWC-8061L-1-ON-FF-D	Lighted Wind Cone; Frangible pole; 10-ft tall; LED obstruction light; Incandescent PAR lights (596w total)	WC141SPC WC110PWC

Note: Option –C available for LED versions; internally & externally lighted (74w total)

PHC-61002-1	Heliport Controller; Variable brightness	HL410PHC
-------------	--	----------

Note: For fixed brightness, delete –VB from all lights and us PHC-61001-1

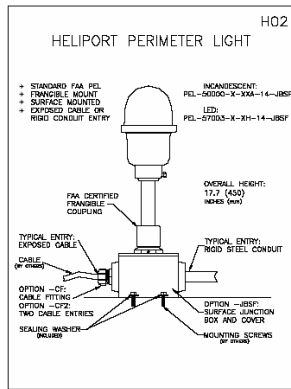
POL-21003-R-1F-34B-S	Obstruction Light LED single	OL190LED
----------------------	------------------------------	----------

Other Equipment:

PRC-65001-1-xxx.xxx	Radio Controller	HL416PRC
PLL-21003-G-1F-34B-S	Simple Heliport Locator Light; LED; flashing	HL321PLL
PHB-37001-CGY-1-H	Heliport Beacon LED 3-colors	HL315PHB
PHB-37001-C-1-M	ICAO Identification Beacon Morse Code LED	HL315PHB
PHF-53002-500Q-JBSF	Heliport Floodlight; frangible; ground mounted; Junction box	HL220PHF

Catalog numbers based on 120V and FAA recommended light colors.
Modify all catalog numbers as required for voltage and color changes.

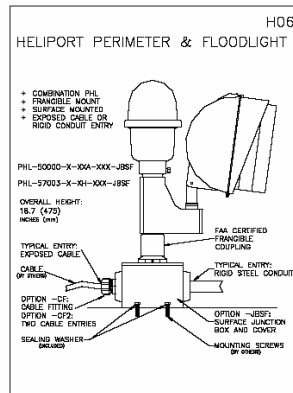
Start Over 



PEL JBSF



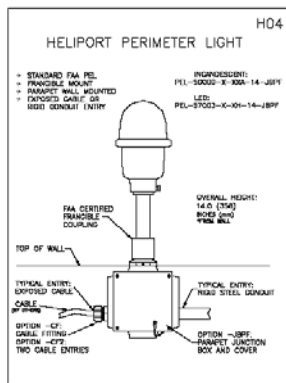
PEL LP JBS3



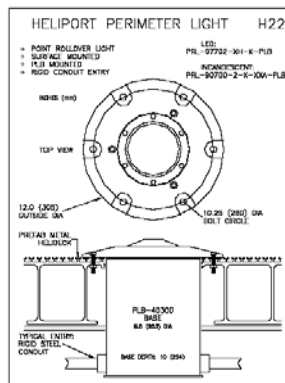
PHL JBSF



POL



PEL JBPF



PRL-90700 PLB



PSF



PHB LED

Below are most common applications. For other versions or special requirements, contact Point Lighting.

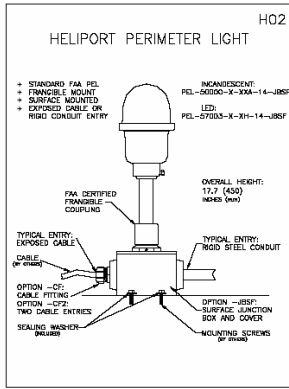
<u>Selections</u>	<u>Use</u>	<u>File</u>
PRL-90700-2-G-PLB	TLOF and/or FATO; 12-inch dia; PLB-40300 base	HL121PRL
PEL-50000-G-69A-14-JBSF	FATO; FAA frangible; Surface junction box	HL135PEL
PHL-50000-G-69A -500-JBSF	FATO; FAA frangible; Halogen floodlight; Surface junction box	HL145PHL
PEL-50000-G-69A -14-JBPF	FATO; FAA frangible; Parapet junction box	HL135PEL
PHL-50000-G-69A -500-JBPF	FATO; FAA frangible; Halogen floodlight; Parapet junction box	HL145PHL
PEL-50000-G-69A -LP34-JBS3	FATO; Low profile; Surface junction box	HL155PEL
PSF-53005-1	FATO; surface mounted; includes 90w floodlamps(2)	HL200PSF
PWC-8071L-1-ON-HBA	Lighted Wind Cone; Hinged base pole; 23-ft tall; Obstruction light; Incandescent PAR lights	WC144SPC WC110PWC
PWC-8061L-1-ON-FF	Lighted Wind Cone; Frangible pole; 10-ft tall; Obstruction light; Incandescent PAR lights Note: If roof mounted, add option -G-T for safety	WC141SPC WC110PWC
PHC-61001-1	Heliport Controller; Fixed brightness	HL411PHC
POL-20000-R-116-34B-DT	Obstruction Light double with transfer	OL110POL

Other Equipment:

PRC-65001-1-xxx.xxx	Radio Controller	HL416PRC
PLL-21003-G-1F-34B-S	Simple Heliport Locator Light; LED; flashing	HL321PLL
PHB-37001-CGY-1-H	Heliport Beacon LED 3-colors	HL315PHB
PHB-37001-C-1-M	ICAO Identification Beacon Morse Code LED	HL315PHB
PHF-53002-500Q-JBSF	Heliport Floodlight; frangible; ground mounted; Junction box	HL220PHF

Catalog numbers based on 120V and FAA recommended light colors.
Modify all catalog numbers as required for voltage and color changes.

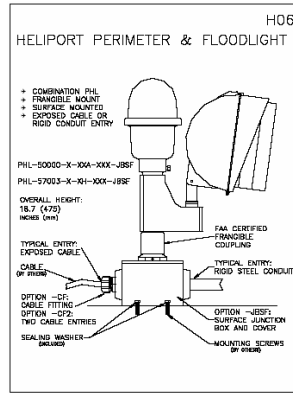
Start Over 



PEL JBSF



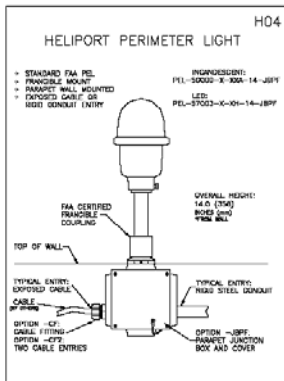
PEL LP JBS3



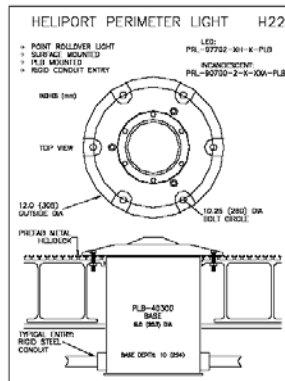
PHL JBSF



POL



PEL JBPF



PRL-90700 PLB



PSF



PHB LED

Below are most common applications. For other versions or special requirements, contact Point Lighting.

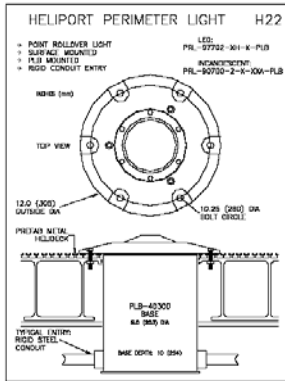
<u>Selections</u>	<u>Use</u>	<u>File</u>
PRL-90700-2-G-PLB	FATO; 12-inch dia; Conduit system; PLB-40300 base	HL121PRL
PEL-50000-G-69A-14-JBSF	FATO; FAA frangible; Surface junction box	HL135PEL
PHL-50000-G-69A -500-JBSF	FATO; FAA frangible; Halogen floodlight; Surface junction box	HL145PHL
PEL-50000-G-69A -14-JBPF	FATO; FAA frangible; Parapet junction box	HL135PEL
PHL-50000-G-69A -500-JBPF	FATO; FAA frangible; Halogen floodlight; Parapet junction box	HL145PHL
PEL-50000-G-69A -LP34-JBS3	FATO; Low profile; Surface junction box	HL155PEL
PSF-53005-1	FATO; surface mounted; includes 90w floodlamps(2)	HL200PSF
PWC-8071L-1-ON-HBA	Lighted Wind Cone; Hinged base pole; 23-ft tall; Obstruction light; Incandescent PAR lights	WC144SPC WC110PWC
PWC-8061L-1-ON-FF	Lighted Wind Cone; Frangible pole; 10-ft tall; Obstruction light; Incandescent PAR lights	WC141SPC WC110PWC
PHC-61001-1	Heliport Controller; Fixed brightness	HL411PHC
POL-20000-R-116-34B-DT	Obstruction Light double with transfer	OL110POL

Other Equipment:

PRC-65001-1-xxx.xxx	Radio Controller	HL416PRC
PLL-21003-G-1F-34B-S	Simple Heliport Locator Light; LED; flashing	HL321PLL
PHB-37001-CGY-1-H	Heliport Beacon LED 3-colors	HL315PHB
PHB-37001-C-1-M	ICAO Identification Beacon Morse Code LED	HL315PHB
PHF-53002-500Q-JBSF	Heliport Floodlight; frangible; ground mounted; Junction box	HL220PHF

Catalog numbers based on 120V and FAA recommended light colors.
Modify all catalog numbers as required for voltage and color changes.

Start Over 



PRL-97702 PLB-MT



PRL-97702 PLB-MT



PRL-LSM-MT



PSF-97702-MT



PSF-53005-MT

Below are most common applications. Option –MT means “marine treatment”; see catalog data for process description. For other versions or special requirements, contact Point Lighting.

<u>Selections</u>	<u>Use</u>	<u>File</u>
PRL-97702-1H-G-VB-PLB-MT	TLOF and/or FATO; 12-inch dia; Conduit system; PLB-40300 base	HL116PRL
PEL-57003-G-1H-LP34-JBS3-MT	FATO; Low profile elevated; Surface junction box	HL155PEL
PEL-57003-G-1H-LP34-JBP3-MT	FATO; Low profile elevated; Parapet junction box	HL155PEL
PRL-97002-1H-G-VB-LSM-MT	FATO; Low surface mount	HL117PRL
PSF-53005-1-MT-L	FATO; surface mounted; LED floodlamps(2)	HL200PSF
PWC-8061L-1-ON-FF-D-L-G-T	Lighted Wind Cone; 10-ft tall; LED obstruction light; LED PAR lights (58w total); with safety options of stainless steel tether & machined solid coupling	WC120PWC
PWC-8061L-1-ON-FF-D-G-T	Lighted Wind Cone; 10-ft tall; LED obstruction light; Incandescent PAR lights 596w total); with safety options of stainless steel tether & machined solid coupling	WC141SPC WC110PWC
	Note: Option –C available for LED version; internally & externally lighted (74w total)	
PHC-61001-1	Heliport Controller; Fixed brightness; N4X fiberglass enclosure	HL411PHC
PHC-61003-1	Heliport Controller; Variable brightness; N4X fiberglass enclosure	HL410PHC
	Note: Stainless Steel enclosure available; specify in description.	

For fixed brightness, delete –VB from all lights and us PHC-61001-1

POL-21003-R-1F-34B-S	Obstruction Light LED single	OL190LED
----------------------	------------------------------	----------

Catalog numbers based on 120V and FAA recommended light colors. Modify all catalog numbers as required for voltage and color changes.



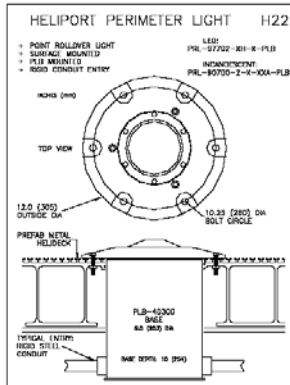
PRL-90700 PLB-MT



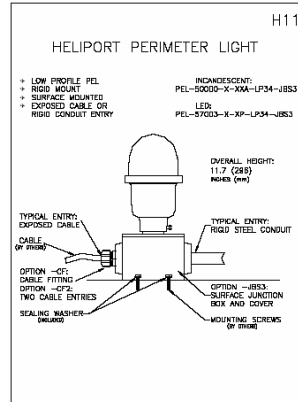
PEL LP JBS3-MT



PEL JBP3-MT



PRL-90700 PLB-MT



PEL LP JBS3-MT



PSF-53005-MT

Below are most common applications. Option -MT means "marine treatment"; see catalog data for process description. For other versions or special requirements, contact Point Lighting.

<u>Selections</u>	<u>Use</u>	<u>File</u>
PRL-90700-2-G-69A-PLB-MT	TLOF and/or FATO; 12-inch dia; Conduit system; PLB-40300 base	HL121PRL
PEL-50000-G-69A-LP34-JBS3-MT	FATO; Low profile elevated; Surface junction box	HL160PEL
PEL-50000-G-69A-LP34-JBP3-MT	FATO; Low profile elevated; Parapet junction box	HL160PEL
PSF-53005-1	FATO; surface mounted; includes 90w floodlamps(2)	HL200PSF
PWC-8061L-1-ON-FF-G-T	Lighted Wind Cone; Frangible pole; 10-ft tall; Obstruction light; Incandescent PAR lights with safety options of stainless steel tether & machined solid coupling	WC141SPC WC110PWC
PHC-61001-1	Heliport Controller; N4X fiberglass enclosure Note: Stainless Steel enclosure available; specify in description.	HL411PHC
POL-20000-R-116-34B-DT	Obstruction Light double with transfer	OL110POL

Catalog numbers based on 120V and FAA recommended light colors. Modify all catalog numbers as required for voltage and color changes.